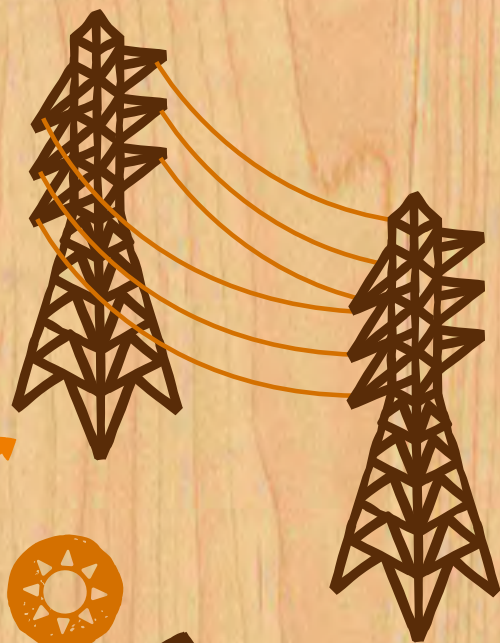


ENERGY



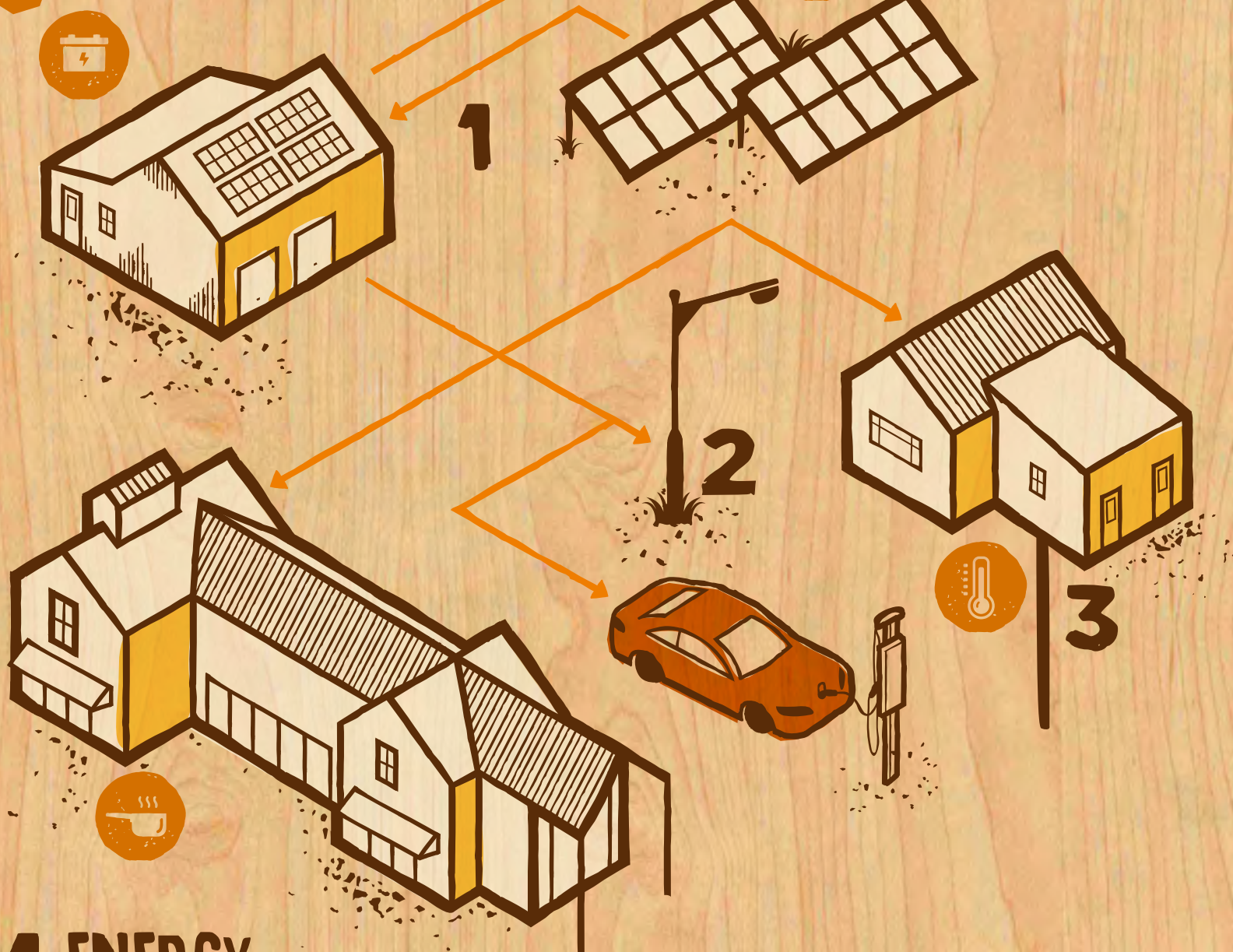
NET ZERO ENERGY

Energy conservation is a key design goal for Camp Glenorchy and we are aiming to using 50% less energy than similar facilities.

We're also aiming for Net Zero Energy Building certification within the Living Building Challenge. This means that, over the course of a year, we need to **generate as much energy on-site via renewable sources as we use.**

The cabins and common spaces our guests will use have been designed with these energy targets in mind. We are crafting buildings that harness the power of the sun and the wind to **keep warm in winter and cool in summer**, while using energy-efficient systems and appliances.

As part of our journey towards Net Zero Energy Building certification we will be **sharing information about Camp Glenorchy's energy performance.** Data from the site will be made available so people can see how much energy we're generating, how much we're using, and how we are tracking against our energy goals.



1 ENERGY GENERATION AND STORAGE

Our solar garden will use energy from the sun.

Solar panels will power Camp Glenorchy's systems and appliances. We are researching battery systems that will allow us to store excess energy generated during the day in batteries that allow us to use it after the sun has gone down.

2 SMART LIGHTING

Energy-efficient, automated LED lights will be used indoors and outdoors.

This provides safety and guidance for guests as they walk around the site, and **comfortable light levels** when they're relaxing in their cabins.

3 EFFICIENT HEATING

Our cabins and common spaces will be cosy and warm throughout the winter.

Thanks to an innovative system that uses **circulating water heated by the sun** and ground source heat pumps.

